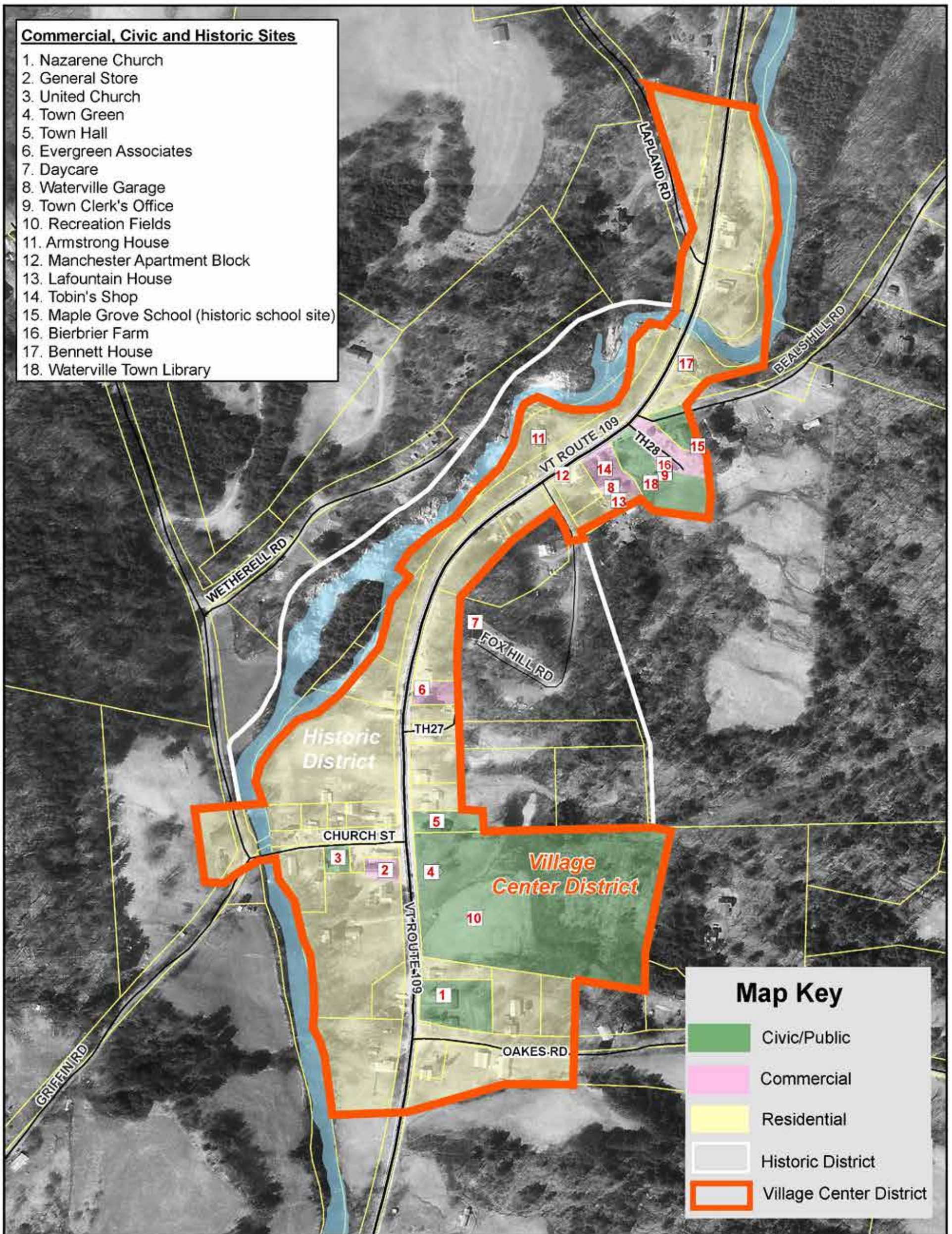


Waterville Village Center District

Commercial, Civic and Historic Sites

1. Nazarene Church
2. General Store
3. United Church
4. Town Green
5. Town Hall
6. Evergreen Associates
7. Daycare
8. Waterville Garage
9. Town Clerk's Office
10. Recreation Fields
11. Armstrong House
12. Manchester Apartment Block
13. Lafountain House
14. Tobin's Shop
15. Maple Grove School (historic school site)
16. Bierbrier Farm
17. Bennett House
18. Waterville Town Library



Map Key

- Civic/Public
- Commercial
- Residential
- Historic District
- Village Center District



December 2015



Vermont Coordinate System, Zone 5526,
Transverse Mercator, NAD 1983.
For more information, please contact:
Lamoille County Planning Commission
PO Box 1009, 43 Portland Street
Morrisville, VT 05661-1009
802.888.4548 1.802.888.6928

**Board Approved
01-25-2016**

It should be noted that the historic district boundary line was delineated from the original application in 1980.

SOURCE:
 POLITICAL BOUNDARIES: 1:24000 USGS Quadrangles, VCGI, 1991.
 ROADS: 1:5000 E-911 Road Data, 2015
 SURFACE WATER: On-screen digitized from 1:5000 digital orthophotos using USGS 7 1/2' quadrangles and 1:20000 color infrared aerial photography as additional source material. VCGI for VHD-USGS, 2001.

420

 Feet

N