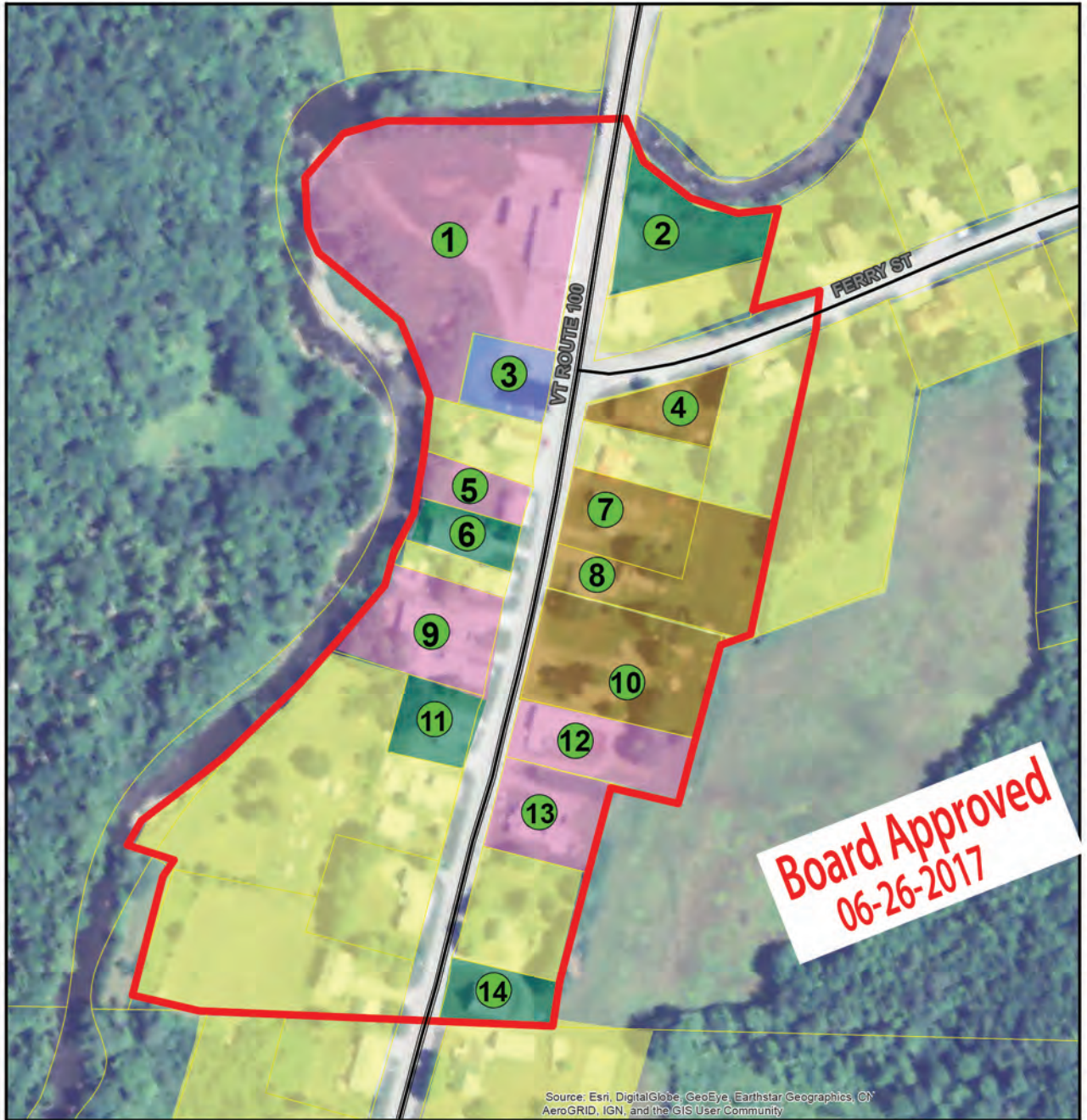


Proposed North Hyde Park Village Center Designation

Map 1

Hyde Park, Vermont



Board Approved
06-26-2017

Source: Esri, DigitalGlobe, GeoEye, Earthstar Geographics, CN AeroGRID, IGN, and the GIS User Community

Civic, Commercial & Multi-family Housing Sites:

1. Sutherland Welles
2. Old Fire House
3. North Hyde Park Post Office/Apartments
4. Apartment Building-Two Units
5. Former Hotel-Commercial in Transition
6. Grange Building/Historical Society
7. Transitioning to Multi-family/Apartments
8. Duplex/Apartments
9. U-Haul Center
10. Apartment Building
11. First Congregational Church
12. Former Grocery Store
13. Bishop Drywall
14. Advent Christian Church



Transverse Mercator,
VT State Plane,
Meters, NAD83

For planning purposes only.
Not for regulatory interpretation.



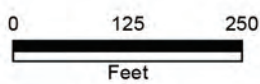
Map Key

- Proposed Village Center Boundary
- Parcel
- Commercial, Civic, & Multi-family Housing Sites

Land Use Type

- Multi-family Housing
- Civic
- Commercial
- Mixed Use
- Residential

SOURCE: POLITICAL BOUNDARIES: 1:24000 USGS Quadrangles, VCGI, 1991.
ROADS: 1:5000 E-911 Road Data, 2015.
SURFACE WATER: On-screen digitized from 1:5000 digital orthophotos using USGS 7 1/2' quadrangles and 1:20000 color infrared aerial photography as additional source material, VCGI for VHD-USGS, 2001.
VILLAGE CENTER BOUNDARY: Digitized by LCPC, May 2017.



Lamoille County
Planning Commission
PO Box 1637
52 Portland Street
Morrisville, VT 05661-1009
802.888.4548 f 802.888.6938
www.lcpcvt.org
May 2, 2017